

12MP 3G GPRS MMS SMS Control Scouting Trail Camera



1. Introduction.....	1
1.1 Application.....	1
1.2 Power Supply.....	1
1.3 Caution.....	1
1.4 Key Features.....	1
2. Whole View and Details of Camera.....	3
2.1 Front View of Camera.....	3
2.2 Right Side View of Camera.....	3
2.3 Back View of Camera.....	3
2.4 Bottom View of Camera.....	4
2.5 Remoter.....	4
2.6 Screen Information Display.....	6
2.7 Settings Menu.....	6
3. Quick Operation.....	7
3.1 Load Battery.....	7
3.2 Insert TF Card.....	7
3.3 Power on.....	8
3.4 Menu Setting Operation.....	8
3.4.1 Photo Menu.....	8
3.4.2 Video Menu.....	9
3.4.3 System Menu.....	11
3.4.4 MMS Menu.....	14
3.4.5 SMTP Menu.....	15
4. MMSCONFIG Setting.....	16
5. SMS Control.....	17
6. Firmware Upgrade.....	18
7. Specification.....	19
8. Packing List.....	20

1. Introduction

Thank you for choosing one of our highly qualified 3g sms control Scouting Trail Camera. This 12MP HD digital camera was totally R&D by our diligent and smart engineers based on feedbacks and requirements from customers globally.

1.1 Application

This digital camera is an ideal product for housing security, warehouse surveillance, and monitoring wild animals with its camouflage appearance and nice shape. It is convenient to install or fasten, could be used to take photographs manually and carry on long-time videos in Test mode.

- a. Instant surveillance camera for home, office, construction site, and warehouse, etc
- b. Motion-triggered infra-red night vision surveillance;
- c. Animal observation and hunting;

1.2 Power Supply

a. AA Alkaline batteries

This camera can either work with 4 or 8 AA Alkaline batteries.

Pls note that the voltage of rechargeable AA batteries (1.2V) is insufficient to power this device. Batteries should be inserted as indicated inside the battery case.

b. Solar Panel

To bring users better using experience, our engineers designed this camera to be able to work with most standard 6~9V lithium battery build-in solar panels.

We strongly recommend the camera works with the original solar panel.

c. Power Adapter

This camera can also be powered by an external 6~9V DC adapter. Recommend to remove the alkaline batteries when power adapter is used, to avoid surcharging.

1.3 Caution

- a. Please insert the TF-card when the power switch is at OFF position before testing the camera.
- b. Please do not insert or take out the SD-card when the power switch is at ON position.
- c. It is recommended to format the SD-card by the camera when used at the first time.
- d. The camera will be in USB mode when connected to a USB port of a computer. In this case, the SD-card functions as a removable disk.
- e. Please ensure sufficient power when having firmware upgrade, otherwise the upgrade process could be interrupted incorrectly. If any fault occurs after improper upgrading process, the camera may stop function properly.

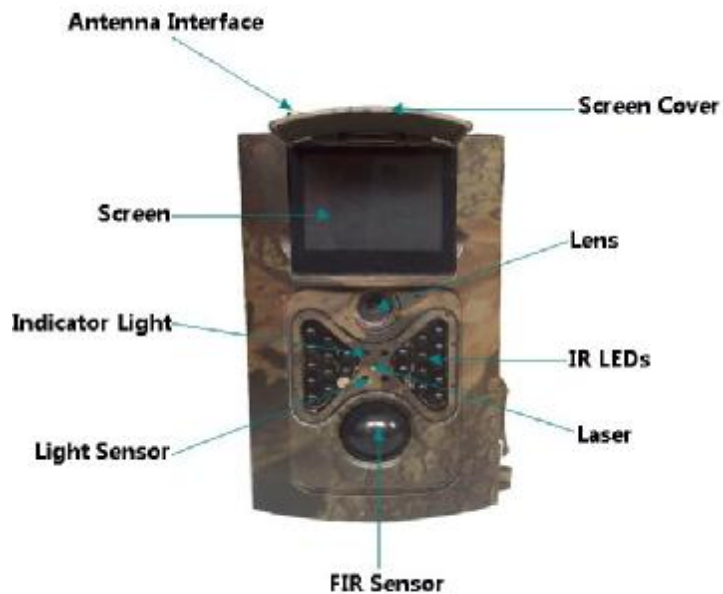
1.4 Key Features

1	Built-in 2.0" TFT color screen to review photos and videos on camera
2	21 pcs IR LEDs for flash range as 20 meters
3	Programmable 5/8/12 Megapixel high-quality resolution

4	Color pictures during day; black and white at night
5	Adjustable PIR sensitivity; HIGH, MID, LOW
6	Impressive quick trigger time: 0.7s
7	Multi-shot pictures; 1,3,6,9
8	Adjustable delay between motions; 1/5/10/30 seconds/minutes
9	Adjustable video length: 10/30/60/90 seconds
10	With 8 AA alkaline batteries, the longest standby time is up to 6 months
11	Available operation temperature: -20℃ to 60℃
12	With specified Timer, camera can be programmed to work only during preset time period every day
13	Stamp of date, time, temperature and moon phase on every picture
14	Sound Recording
15	Support 3G and 2G SIM cards to get real-time photos; If 3g SIM card, it will works on 3G net work, faster sending photos
16	With MMS/SMTP function, camera can transmit photos to 1-4 preset mobile phones or 1-4 email per trigger
17	SMS to enable camera to shoot a photo and send back instantly, ask camera to work or not work, get number of taken picture and battery status

2. Whole View and Details of Camera

2.1 Front View of Camera



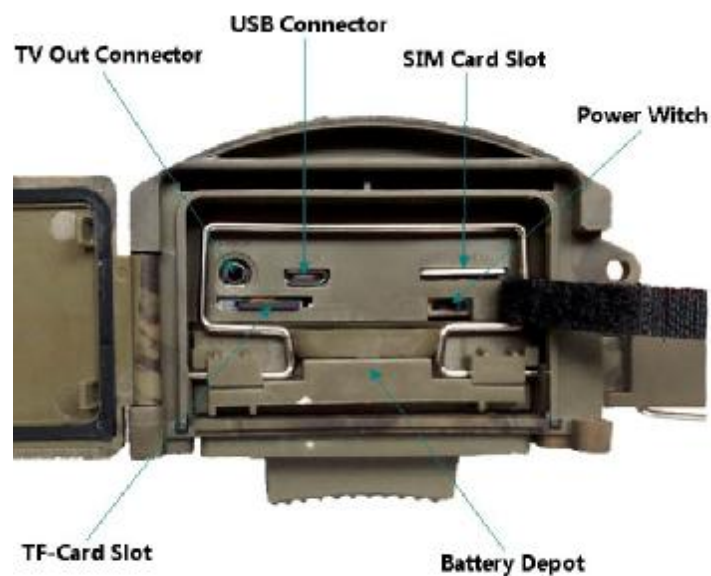
2.2 Right Side View of Camera



2.3 Back View of Camera



2.4 Bottom View of Camera

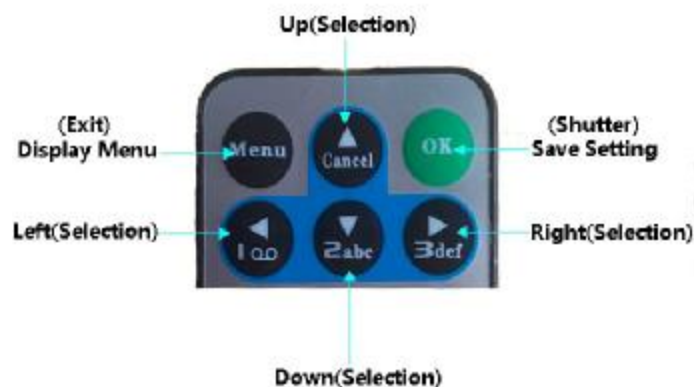


2.5 Remoter

The infrared remoter is an input device of the camera and is primarily used for customer settings. Its maximum remote distance is 9 meters.



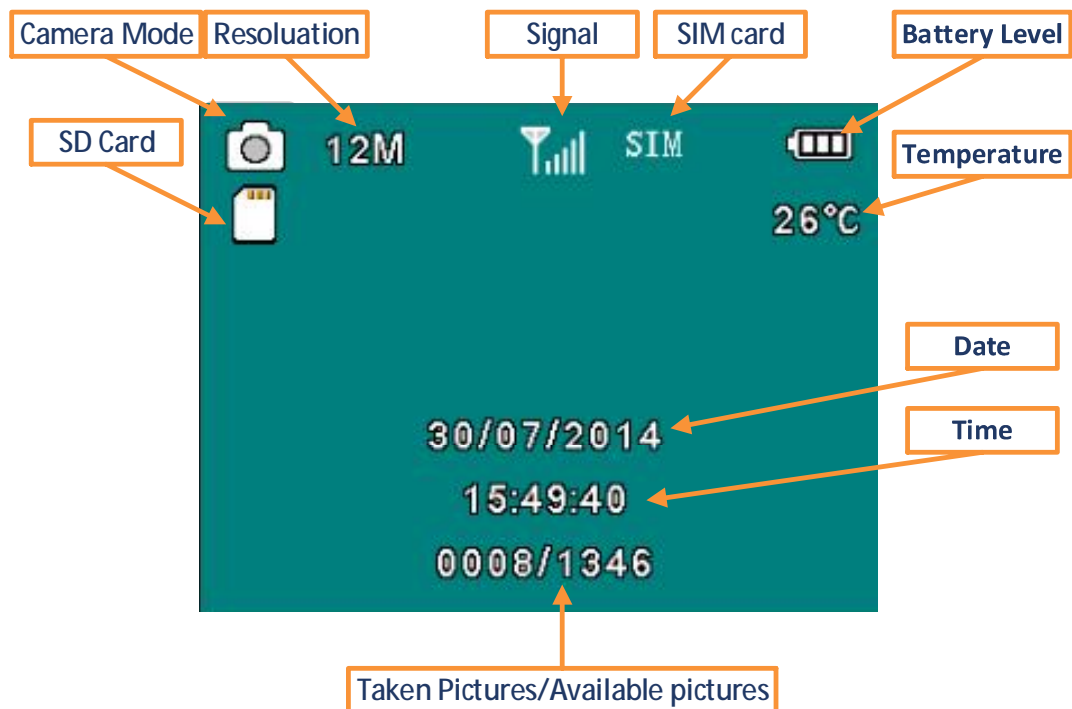
Note: Press the punctuation “*” for laser pointer.



Note:

1. Press OK directly, the camera will take picture or video directly.
2. Press Right directly, the picture or video recorded can be viewed
3. Viewing picture, press up or down
4. Viewing video, press Left to start, again to stop

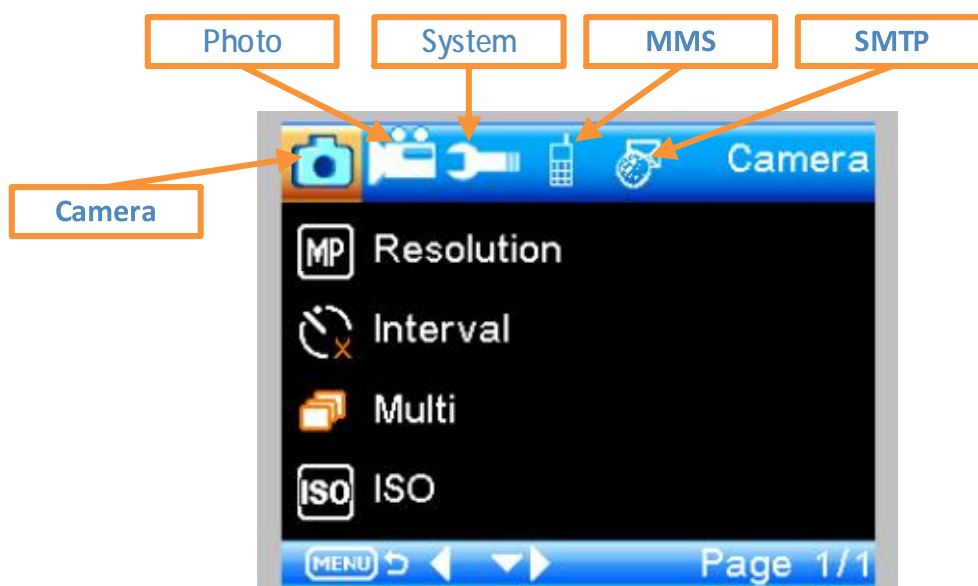
2.6 Screen Information Display



Note: To active its MMS or SMTP function, the camera should find signal and SIM card.

2.7 Settings Menu

There are five parts setting of the camera

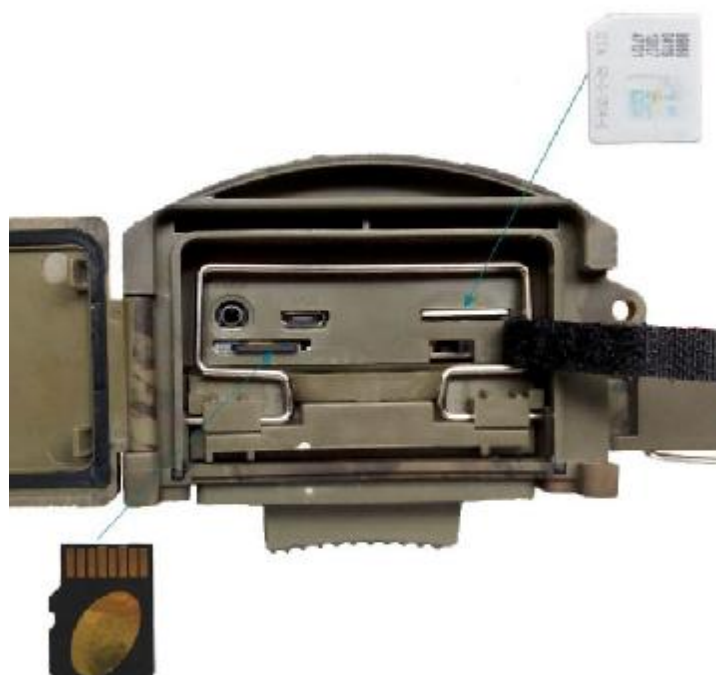


3. Quick Operation

3.1 Load Battery



3.2 Insert TF Card



Note: To active its MMS or SMTP function, pls save setting file Parameter.dat by MMSCONFIG to TF card.

3.3 Power on



Slide Power Switch from OFF to Test or On position, the camera powers on

3.3.1 TEST

In this mode, the screen lights up. User can do the operations by remoter:

- a. Setting Camera Menu, including photo, video and system
- b. Take picture or video
- c. View picture or video

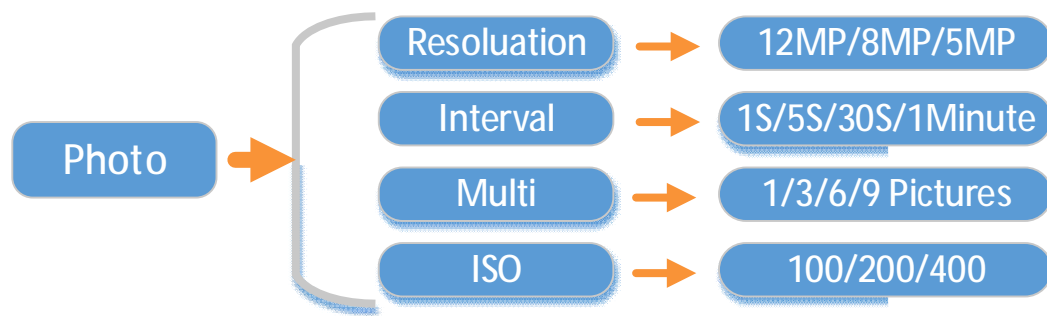
3.3.2 On

In this mode, the screen is closed. The camera works automatically.

3.4 Menu Setting Operation

User can fix photo, video and system menu setting by remoter; MMS menu and SMTP menu setting by software MMSCONFIG from CD.

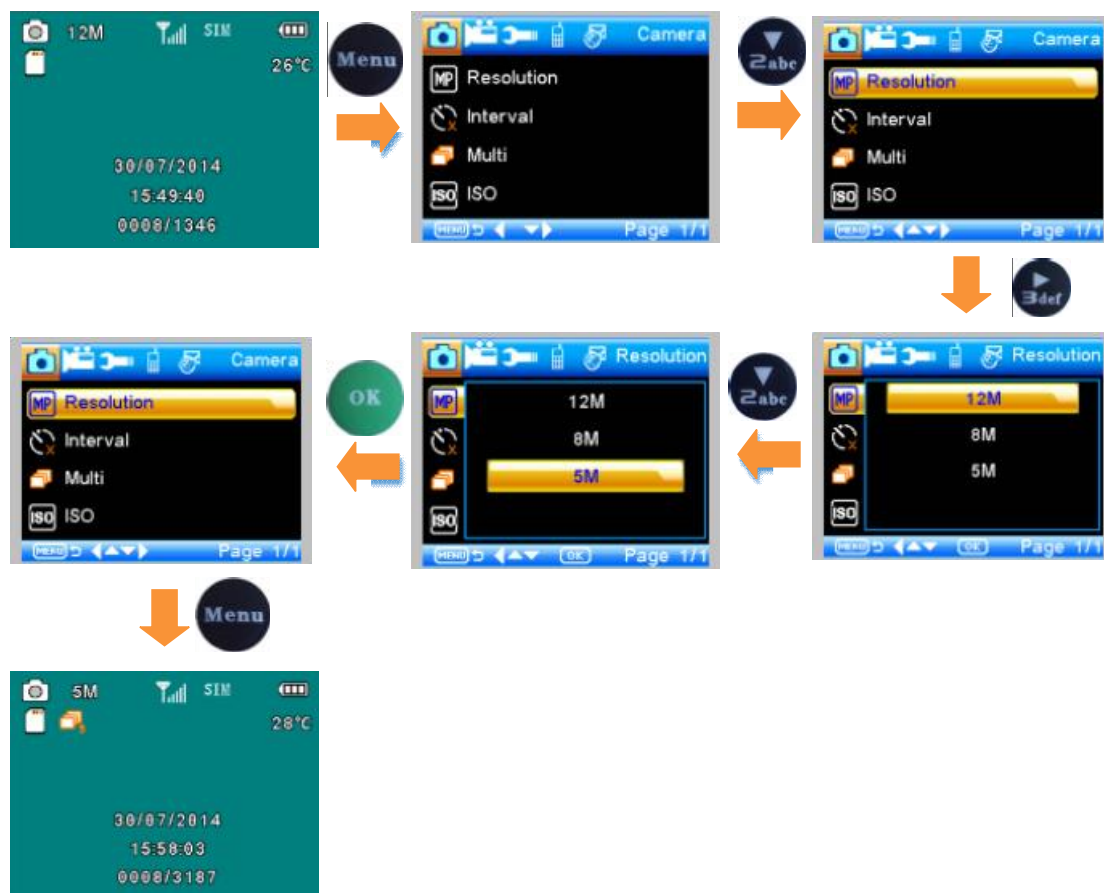
Photo Menu setting



Description:

Menu	Content	Description
Resolution	12MP, 8MP, 5MP	Photo size
Interval	1/5/10/30 sec/min	Waiting time from the last taking
Multi	1/3/6/9	Number of photos taken every time
ISO	100,200,400	The camera exposure level

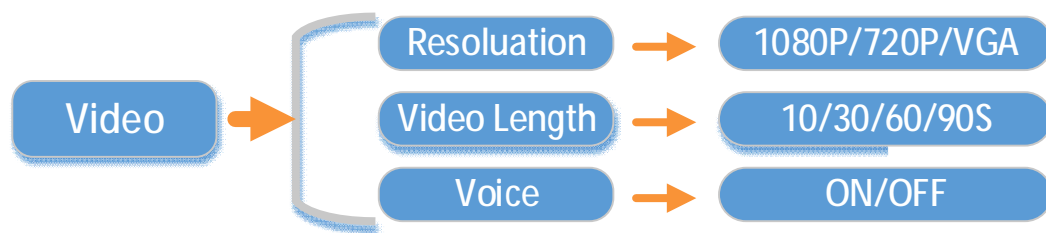
To change 12MP to 5MP Resolution, the remoter operations are:



Note:

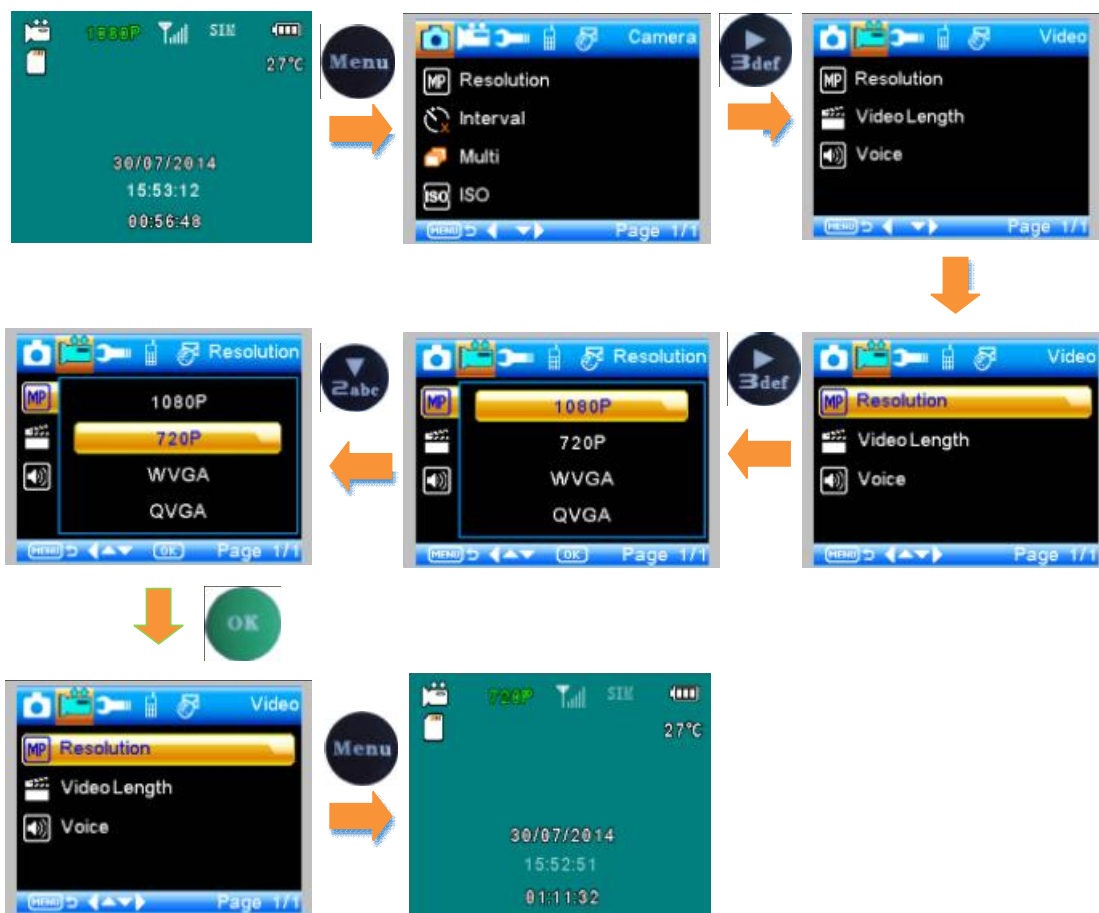
1. The mode is Camera or camera&Video
2. Interval, Multi and ISO setting operations are same.

Video Menu



Menu	Content	Description
Resolution	1080P, 720P, WVGA, QVGA	Video size
Video Length	10S, 30S, 60S, 90S	The time length of video
Voice	On, Off	If On, Video sound is recorded

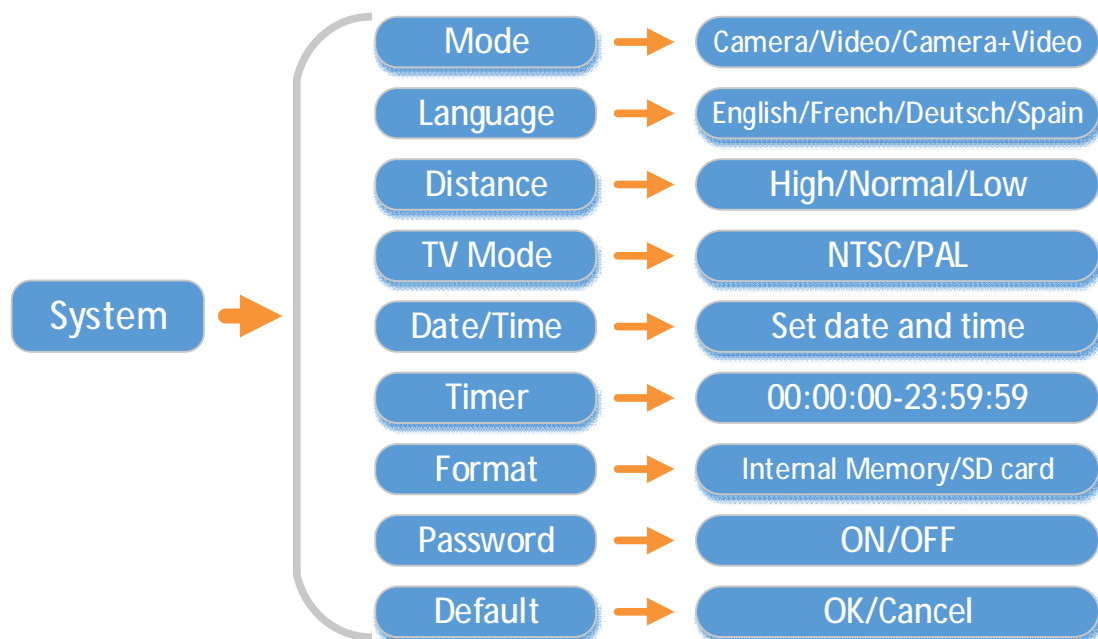
To change 1080P to 720P Resolution, the remoter operations are:



Note:

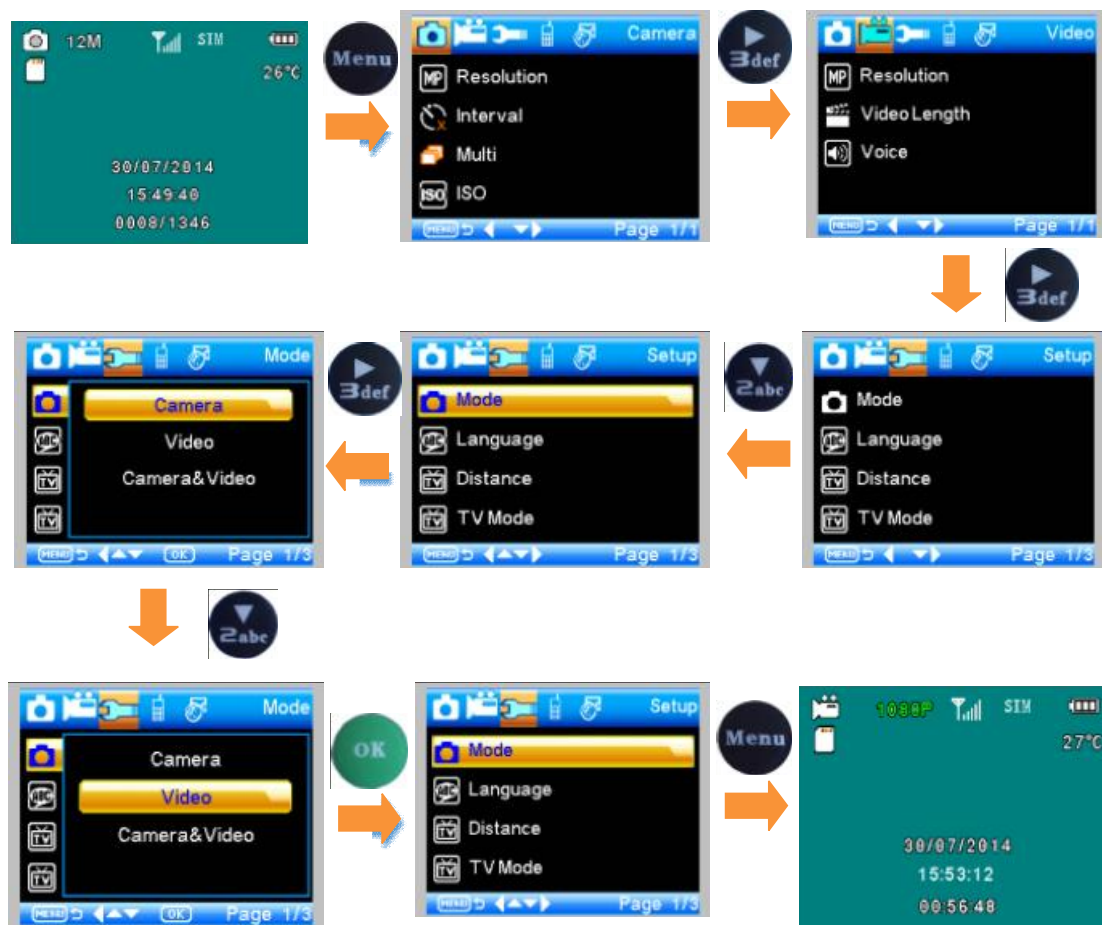
1. The mode is 1080P video mode
2. Video length and voice setting operations are same.

3.4.3 System Menu



Menu	Content	Description
Mode	Camera, video, camera&video	Taking picture, video, picture and video
Language	English, Francais, Deutsch and so on	Camera Menu language
TV Mode	NTSC, PAL	TV play mode
Date/Time	31-07-2014 15:49:40	Date-Month-Year Hour:Minute:Second
Password ON/OFF	ON, OFF	Password of entering camera
Password	****	4 digital number
Timer	On, Off	If On, the camera only works in the period

To change Camera to Video mode, the remoter operations are:




Note:

1. Language, Distance, TV Mode, Format and Default setting operations are same.

2. In Date/Time, Timer and Password setting:

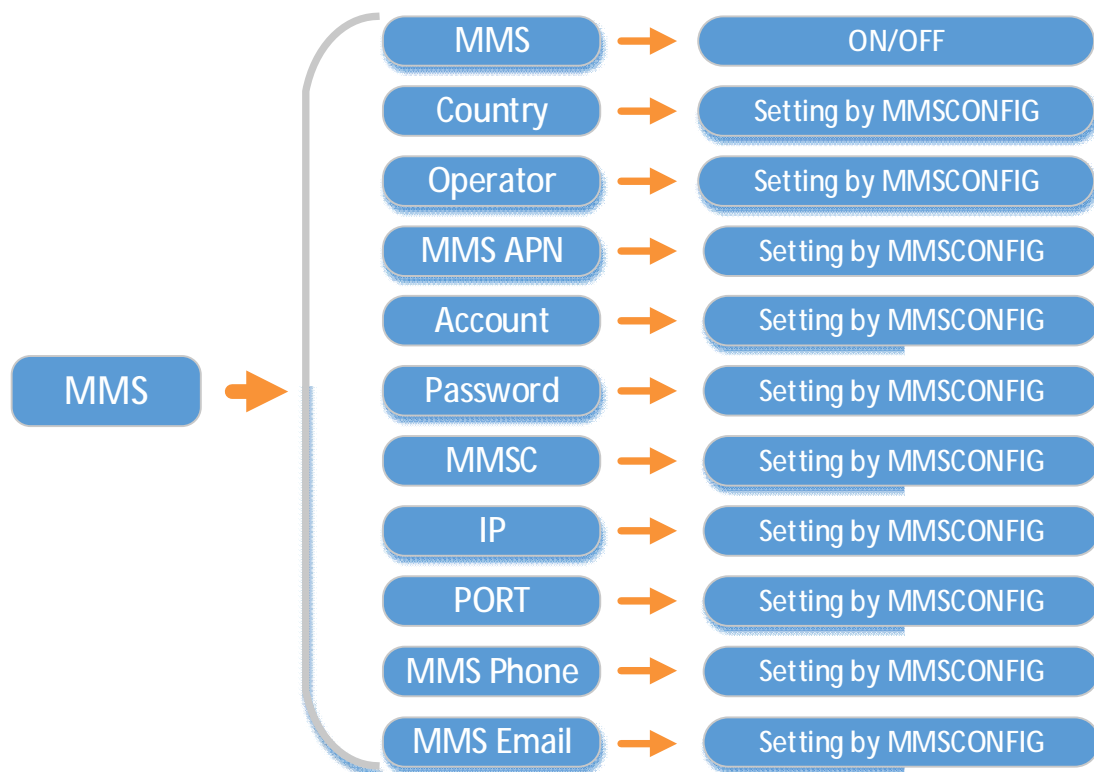
a. Press  or  to select number

b. Press  to enter into next menu

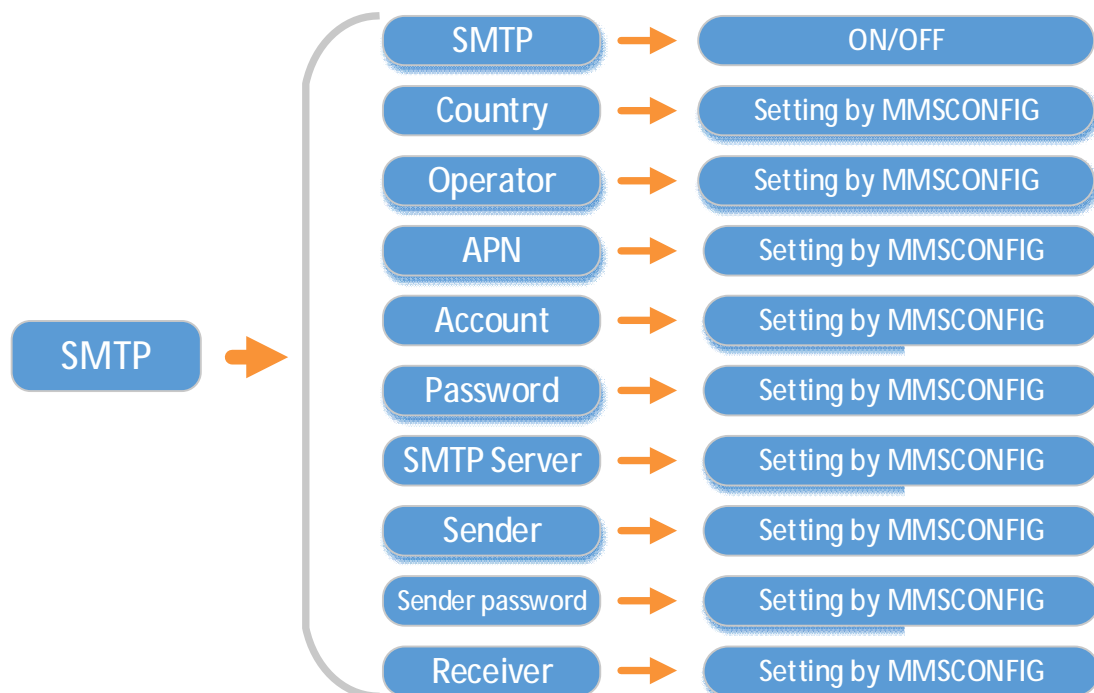
3. After select Default, the setting is:

Setting	Default	Items
Mode	Camera	Camera, Video, Camera&Video
Resolution (Camera)	12M	12M, 8M, 5M
Delay	1 Seconds	1-30 Seconds, 1-30 Minute
Multi	Single	Single, 3, 6, 9 Pictures
ISO	400	100, 200, 400
Resolution (Video)	1080P	1080P, 720P, WVGA, QVGA
Video Length	10s	10s, 30s, 60s, 90s
Date/Time	Same as last time	YY/MM/DD, MM/DD/YY, DD/MM/YY Adjust
Distance	High	High, Normal, Low
Language	English	English, French, Germany, Spanish and Russian
Timer	0 0 0 to 23 59 59	Adjust
Format	Internal Memory	Internal Memory, SD Card
TV Mode	NTSC	NTSC, PAL
Password	Off	Off, On

3.4.4 MMS Menu



3.4.4 SMTP Menu



4. MMSCONFIG Setting

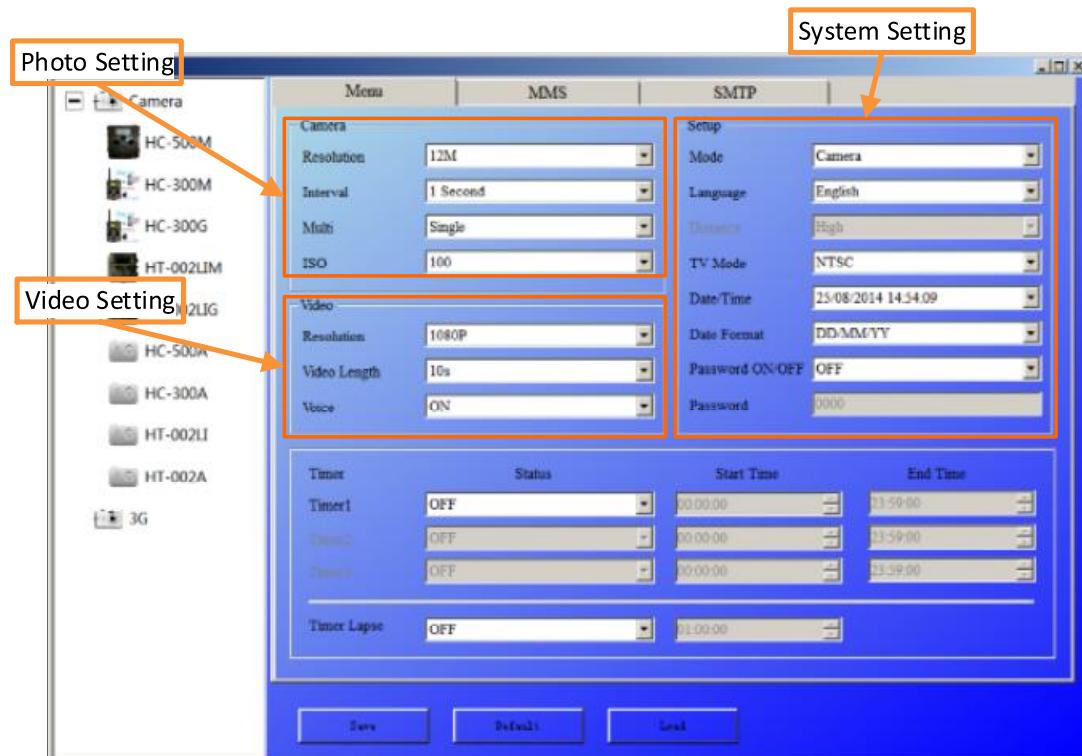
1 Load CD into the computer

2 Run MMSCONFIG.exe file from MMSCONFIG folder

名称 ▲	修改日期	类型	大小
 config	2014/6/11 18:39	配置设置	1
 config.ini.bak	2014/4/1 9:38	BAK 文件	1
 Language	2013/7/8 14:16	XML 文档	55
 MMSCONFIG	2013/12/3 16:19	应用程序	438
 MMSDB	2014/6/11 18:37	Data Base File	26
 MMSOp.dat	2014/8/25 13:46	DAT 文件	22
 SMTPDB	2014/6/11 18:36	Data Base File	12
 SMTPOp.dat	2014/8/25 13:46	DAT 文件	6
 SMTPSERVER	2013/12/3 11:48	Data Base File	1



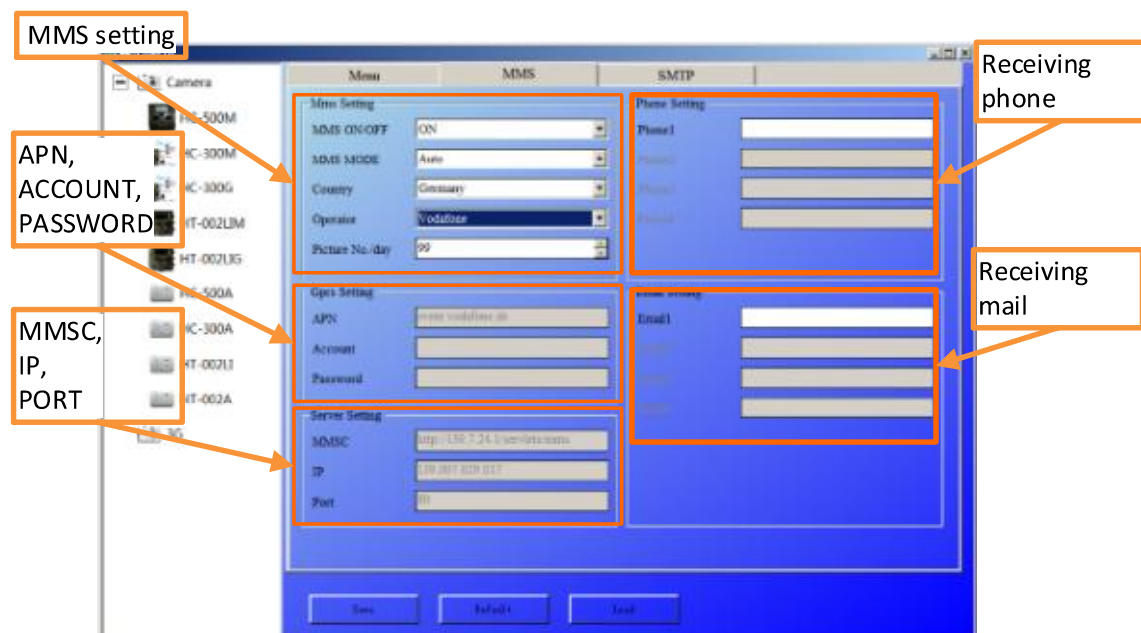
3: Use mmsconfig to set the Photo, Video and System parameter



Note: After setting menu by remoter, user can skip it.

4: Mms setting by mmsconfig

—: Auto MMS Mode:

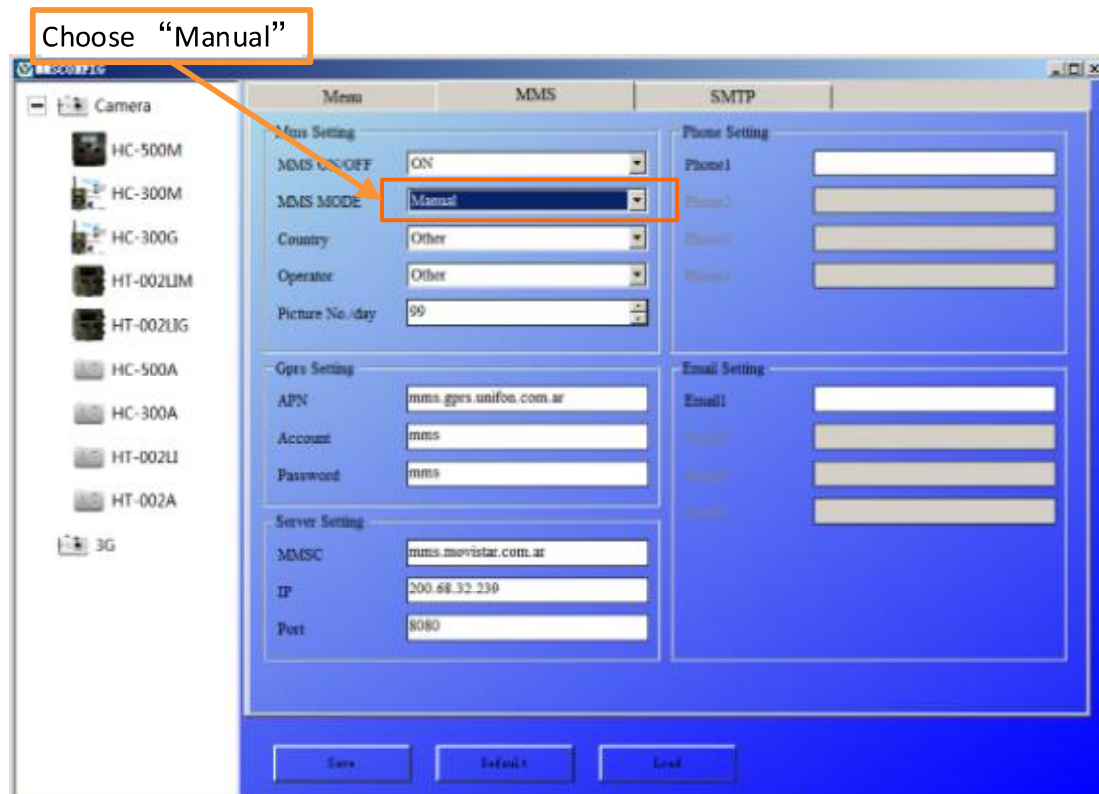


In Auto MMS Mode, there is configured information for selection

- a. Choose Country
- b. Choose Operator
- c. Add phone number for receiving photos
- d. Add email address for receiving photos

二： Manual MMS Mode:

If there is no configured information for selection, pls choose Manual MMS Mode.



Firstly, User need to contact SIM card operator to get APN, Account, Password, MMSC, IP and Port information. Then

- a. Add phone number for receiving photos
- b. Add email address for receiving photos

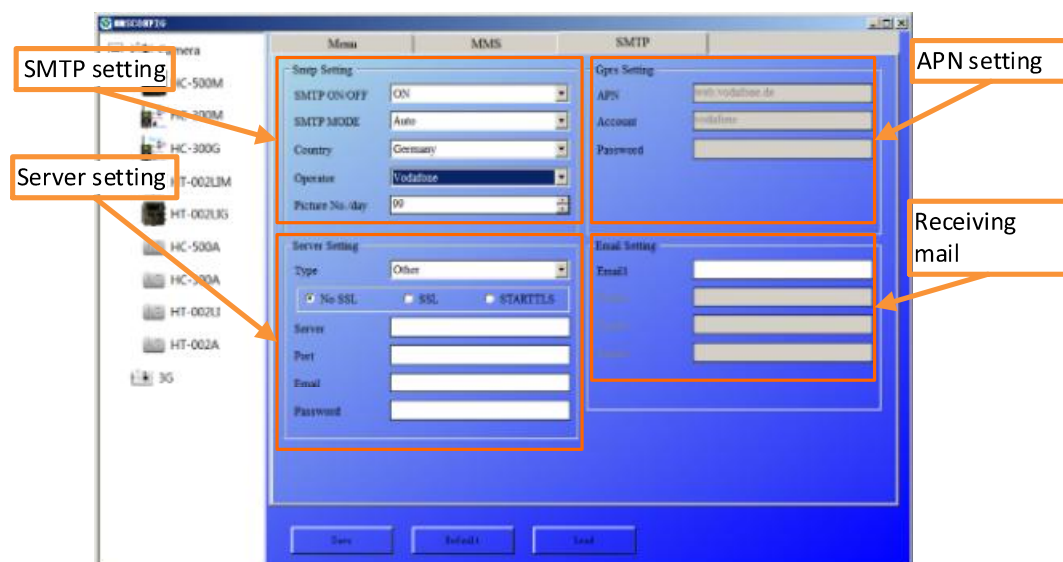
5 Fix SMTP Setting

This way of sending pictures is also called GPRS transmission by users. It's highly welcome now, because the picture is sent from email to email, only charging the flow cost.

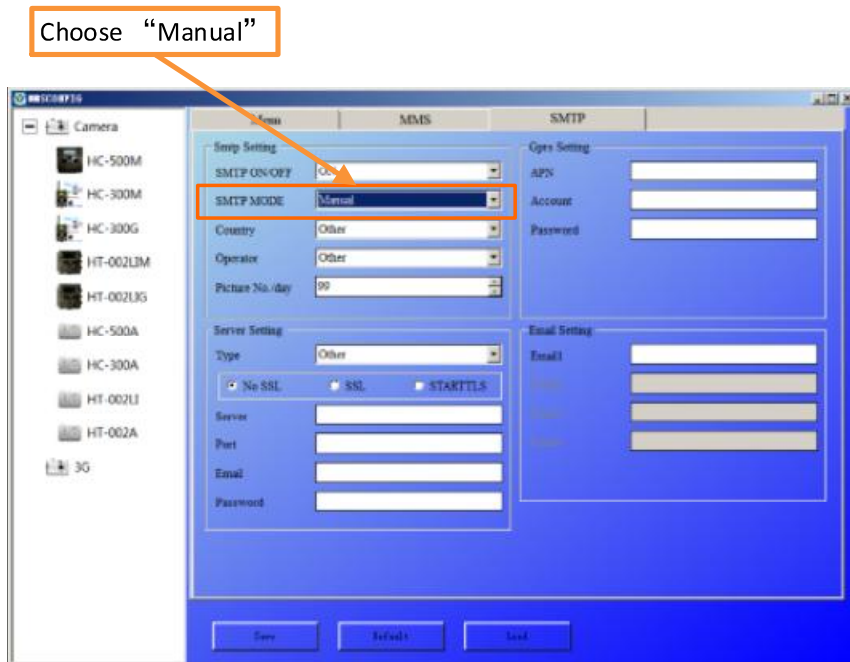
A. Auto SMTP Mode:

In Auto SMTP Mode, there is configured information for selection

- Choose Country
- Choose Operator
- Choose Type of email
- Add sending email address on the left
- Add sending email address password on the left
- Add receiving email address on the right



B. Manual SMTP Mode:

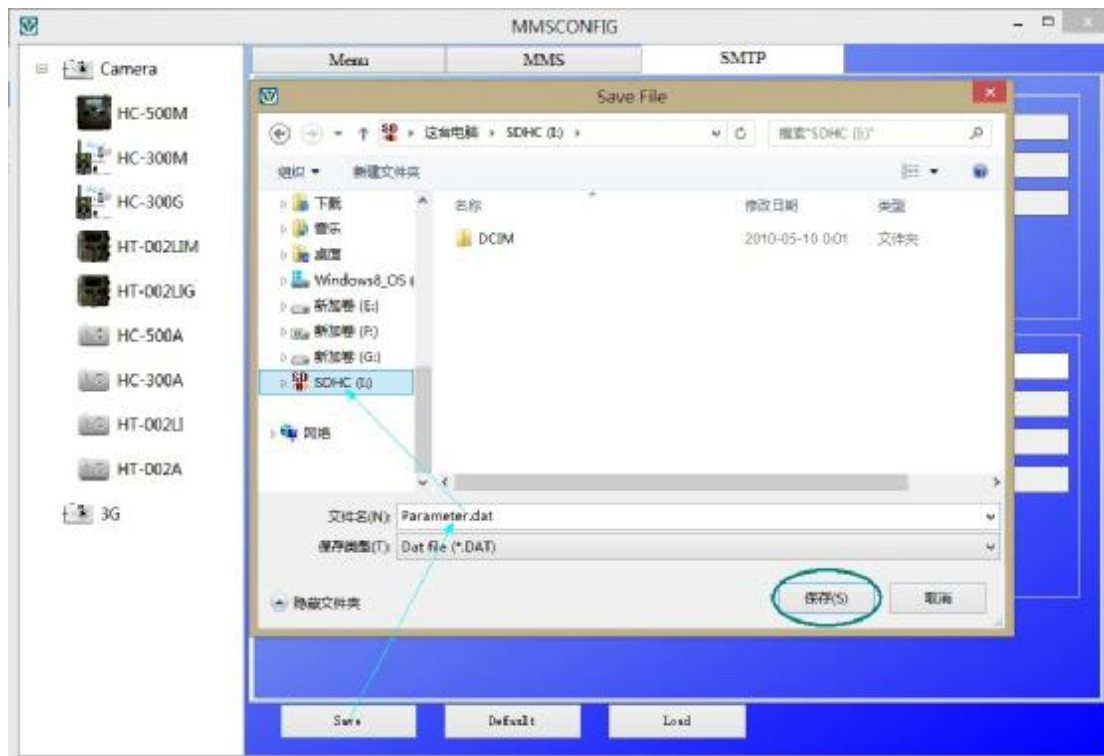


If there is no configured information for selection, pls choose Manual SMTP Mode.

Firstly, User need to contact SIM card operator to get APN, Account, Password information; contact sending email provider to get server, port information.

- a. Add sending email address on the left
- b. Add sending email address password on the left
- c. Add receiving email address on the right

6 Save Parameter.dat to TF card



5. SMS Control

There are 2 ways for using:

1. Send sms code directly
2. Install phone application, select function command

The SMS codes are:

Code	Function	Meaning
530	Camera Start	Start Working
531	Camera Sleep	Stop Working
500	Capture	Camera takes a picture, then sends it to configured phone or email
505	Capture and get pic(MMS mode)	Camera take a picture, then sends it to current phone

520	Get Pic information	Camera send a a text with picture number, SD card capacity, battery lever.
-------	---------------------	--

6. Firmware Upgrade

This camera is equipped with an automatic upgrade function for you. Upgrading is needed only when an improved firmware is available. The operations are as following:

1. Unzip the update file
2. Copy the FW18NA.bin to TF card.
3. Insert the TF card into the camera.
4. Power on the camera (Test Mode) .
5. The camera will read it and update itself automatically. When updating the camera, its screen is black.
6. The screen will light on after being finished
7. Plug out the TF card, then insert it into pc, delete the FW18NA.bin in the TF card.(If you don't do this, the camera will enter update mode when

power on again).

Image Sensor	12 Mega Pixels Color CMOS
--------------	---------------------------

8. Insert the TF card into the camera for its working.

7. Specification

Memory	TF Card to 32GB
Lens	F=3.1; FOV=60 °
Size	145mm * 80mm * 55 mm
IR Filter	Full Automatic IR Filter
TFT Display Screen	2.0 inch
LED	Black Invisible 940nm
PIR Distance	High/Normal/Low
PIR Sensor Sight Angle	120 Degrees
PIR Sensing Distance	82ft/25m
Number of IR LED	21 LEDs
Max Night Vision Lighting Distance	65ft/20 meters
Trigger Speed	0.7second
Low Battery Indicator	Yes
Triggering Interval :	1/5/10/30sec/min (default 1 sec)
Selectable Image Resolution:	12MP/8MP/5MP
Multiple Photo on one detection	1/3/6/9
Video Resolution	1080P/720P/VGA
File Format	JPEG/AVI
Date Time Imprint	Yes
Moon Phase Imprint	Yes
Exposure:	Auto
Password Security	4 digital PIN code
Frequency Bands	GSM 850/900/1800/1900 MHz 3G UMTS/HSPA 850/900/1900/2100
Remote Control	SMS
GPRS transmission	Data transfer by email
MMS to phone	1-4 phone number
MMS to e-mail	1-4 email address
Periodic shot	1Second~24Hours
Stand-by current	0.2mA
Stand-by time	6Months
Interface	TV out (NTSC/PAL); USB; SD Card Holder; 6V DC External
Fix Method	Belt, Tripod Nail
Operation Temperature	-30 ~+70℃
Power Supply	8×AA battery
Camera Socket	Yes
Water proof	IP54
Security authentication	FCC,CE,RoHS

8. Packing List



Digital Camera



Wireless Remote



Antenna



USB Cable



AV Cable



Strap



CD